



Hydrotest Trucks



(940) 855-1962

**Downhole
Tools**



SPEED • SAFETY • PERFORMANCE

Whether you've already built your reputation or you're fighting every day to make a name for your company, one thing's for sure...

Customers don't have time for excuses

At the end of the day, success in business depends on your ability to do it better than your competition. New players come into the market. Every one of them trying to raise the bar so that they appeal to new customers. Larger customers. Customers like yours. • That's where we come in. At **Mathews Machine & Hydraulics**, we are dedicated to providing the best tools and equipment available in the hydrostatic testing industry. Whether you're in the business of testing production tubing, BOPs, or any other heavy iron, when it comes to performance and reliability - we do it right the first time. And with absolute safety at the core of



everything we do. • So if you're looking for a hydrotest truck that will allow you to separate yourself from the crowd, look no further than **MMH**. Our design versatility, attention to detail, and second to none support will give your business the tools that it needs to compete in today's rapidly changing market. • If you've been searching for an equipment manufacturer who treats your success as though their's depends on it, then you are absolutely in the right place. Continue reading to explore how we are constantly pushing hydrostatic testing forward. • And yes, it's still true... how you show up for your customers matters. Always be the best.

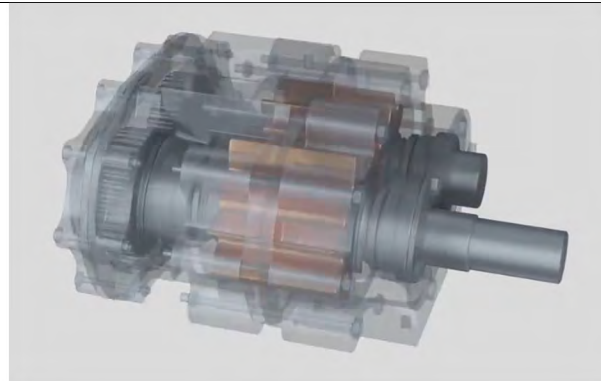
VERSATILITY

When it comes to hydrostatic testing trucks in the oilfield, we've got you covered.

Whether you test tubing on the rack or downhole, BOPs, flowlines, or valves, we have a configuration to exceed your expectations. • With your choice of triplex pump or our proprietary high pressure ram, we give you everything you need to create consistent pressure where you need it. Single hose or dual line, yoyo or setting slips, we have the downhole tools that you need to handle any situation. And with our specially designed 200+ GPM fill pump, you can move through jobs faster than the competition. • If your customers rely on you to test in a variety of applications, we can customize the build to create the perfect combination truck for your needs. Rack and downhole, downhole and BOP, or all three in one. We can even design and build your next trailer or skid mounted unit for testing multiwell pads or just in the yard. And with standard tanks ranging from 640 to 725 gallons and beyond, you always have the water that you need to get the job done. • Others in the industry may offer one or two options, but **MMH** leads the way when it comes to oilfield tubing and BOP testing versatility.



When it comes to quality and durability in a triplex pump, nothing beats the Jetstream 3000 UNx series with uni-valve technology. This unique design brings suction and discharge together in one valve for extreme reliability. We also work with Gardner-Denver and other leading pump manufacturers to give you exactly what you need.



After years of trying to make other pumps work in our high speed rack testing unit, we were forced to come up with a rugged and dependable design of our own. The Matpump is built to be the ultimate 2" gear pump on the market. With flows over 200 gallons per minute, this workhorse can fill tubing, flow lines, valves, and any other oilfield iron you need to pressure up on, quickly and efficiently. It is also perfect for moving fluid from one location to another or refilling your tank between hydrotest jobs.



If you're looking for smooth, dependable pressure... we have the perfect system for you. Our high pressure ram was created to work in concert with the Matpump for rack testing applications, but also provides noise-free pressure when clean chart recording is a must.



Meet the newest addition to our line of high performance pumps. Running up to 47 GPM and 1500 psi, this 80 lb package packs plenty of punch. All without the need for a hydraulic motor. When combined with a triplex pump or our high pressure ram, you can fill and squeeze faster than even your toughest competitor.



RELIABILITY

When it comes to equipment operation, nobody likes surprises. That's why we design our trucks to work hard day in and day out. It's not enough to be tough.. it's got to be oilfield tough.

When you really break it down, the difference between a machine that lasts and one that doesn't hinges on the builder's attention to detail. Are they willing to take the time to do it right? Do they have the decades of experience that it takes to even know what "right" is? Are they going to use 1/4" steel when it matters or is 10 gauge good enough? • Do they stand behind their work with an industry leading warranty? Are they going to make hundreds of small decisions that have a major impact on the quality of their product? In other words, is one provider the clear choice because they flat out build it better? • With hundreds of trucks running all across the country and 90% of the Bakken Shale using our equipment, **MMH** designs are battle tested and proven dependable. And with the volume of feedback that we get, we're able to identify trends and stay ahead of the issues that will be affecting testing companies into the future.



If you are currently running a needle valve style pressure release, then you are very familiar with washed out seats making it impossible to hold pressure. After hearing complaint after complaint from customers, we finally decided to do something about it. This scissor action, hardened steel valve will change the way you think about holding and releasing pressure.



While other vendors may be satisfied with the standard check valve design, we are constantly working to raise the bar. Our double-ended (swappable) body and o-ring seat provide superior flow and repairability with our convenient field rebuild kit. If you're looking for a check valve that holds absolute pressure even after thousands of cycles, we have exactly what you need.



After more than 45 years of building tubing testers, we understand that winches really take a beating in our industry. After years of running the available brands on our units, we discovered that none of them could handle the constant abuse. That's why we designed our winch specifically for the tubing testing industry. When speed, safety, and reliability matter... there really is no comparison.



When it comes to safety and performance, a top sheave needs to be built specifically for the task at hand. Rather than using smaller bolts that are susceptible to breaking, our weld-free design incorporates multiple features to protect floor hands while providing the longest life possible. Choose the only "drop-free" sheave in pipe testing.





SAFETY

In the old days, safety took a backseat to getting the job done. Now, if you aren't operating safely then you won't be operating for very long. In this environment, you need a manufacturer who's thinking ahead.. not falling behind.

Everyone talks about safety. But what does it mean to actually put safety at the forefront of your business. Is it a collection of standard operating procedures? Is it recurring training? Is it a culture? Or is it something that permeates every facet of your organization... including your equipment. • Here at **MMH**, we believe that worksite safety begins at the intersection of man and machine. Often, the right design can virtually eliminate the likelihood of an unexpected event. When you take the time to consider how someone will interact with a product, you can start to predict behavior. Only then can you find ways to build safety into a component before something happens, instead of after. • With decades of experience and a commitment to excellence, **Mathews Machine** is your premier partner when it comes to identifying equipment hazards and reducing risk, both on the job and on the road.



With our unique latching stinger design, even excessive wear won't create a hazard for crews working on the rig floor. Nothing could be easier. The weight of the hose turns the body 90 degrees to engage the latch. Then simply twist to release. It has already become a requirement for majors in the Bakken, with other plays beginning to following suit.



While other manufacturers utilize basic cable controls to actuate their winch, we use a spring return to make sure that the winch is not moving unless the handle is being physically engaged. This virtually eliminates the possibility of being pulled in by the drum. When combined with our industry leading disc brake design for an absolute hold, it's easy to see how **Mathews Machine** has created the best winch system in the tubing testing market.



A significant design flaw that we discovered in downhole testing tools involved the area where the changeover threads onto the mandrel. Other manufacturers utilize a long thread, which leaves it exposed after the mandrel bottoms out. This allows stress fractures to occur whenever side loads are encountered since the thread root is unsupported. We shorten the thread and tighten tolerances to address this common failure point.



When hauling hundreds of gallons of water on country roads, tight turns corners can turn into a dangerous situation. That's why we lowered the CG and designed radius corners into our tanks even as far back as the 1960's. When you take the time to focus on the details, you end up with a safer test truck.

DOWNHOLE TOOLS

Building the best hydrotest truck in the industry is only half the battle. You've also gotta have the tools to back it up.

If you build equipment long enough, you'll find that there are lessons to be learned along the way. Number one is if you're going to send a product out into the oilfield, it just has to work... period. • Every time a customer pressures up on a stand of tubing they are testing the tools as well, so they have to be right. Once you have a design that can handle the punishment, you then look for ways to make it safer and to make it last longer. That means a constant flow of customer feedback and inspecting every detail about how each component works together. • Given that downhole tools have the tightest tolerances in our business, we utilize the latest CNC machining technology to guarantee the highest quality and repeatability in our parts. If you take the best designs and machine them with the best equipment, you get a downhole tool that's built to exceed expectations.



When asked about overhot and fishing neck concerns, everyone said the same thing. Under certain types of side-loads, a standard fishing neck can release from the overshot and fall. That's why we adjusted our tolerances to all but eliminate this common problem. And we shortened the shank to reduce the slide-hammer action after tagging that shortens the life of both parts.



Our improved slip assembly features an extra-long internal cone thread to withstand the abuse caused by tagging. With this adjustment, the cone and rod maintain a solid connection instead of the loose fit that eventually occurs with other designs. We have also revised the angle of the cone to produce a shorter setting distance. This allows for a set that is firm without creating unneeded stress on the slip segments.



Through sending out thousands of overshots, we've discovered that the key to performance and durability starts with the dogs. First, we found that certain critical areas lacked the proper material thickness and required reinforcing. Then we incorporated a taper to make better contact with the fishing neck. And finally we experimented with multiple heat treating options to dial in the best wear characteristics possible.



We have spent a significant amount of time refining our slip segment manufacturing process. Our goal was to refine the heat treating process so that the teeth are incredibly hard while still maintaining flexibility in the core. Striking this balance allows for superior performance while simultaneously extending the life of the part.





7756

Test Pressure
PSI

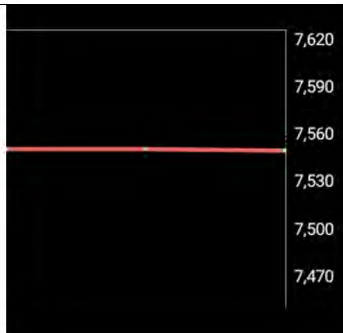
Target pressure: 7450

Minimum hold time: 5 seconds

HYDROSCAN DATA LOGGING

In this new, modern oilfield, producers are looking for metrics in every area of their business. The service companies that provide this data will have the ultimate competitive advantage.

When you venture into the world of software development, a simple idea can become complicated in a hurry. The hardware doesn't want to cooperate. One feature interferes with another. Or something that sounds easy turns out to be a programmer's nightmare. Any number of corners just begging to be cut. • We could have been satisfied with a spreadsheet output that required manual manipulation to create a useable report, instead we built in an auto-generated PDF designed specifically for testers. And we could have met expectations with pass/fail functionality, but we chose to raise the bar by including programmable leak detection. • We could have let good enough be good enough, but we stayed true to our goal of creating the first full featured software application for the hydrostatic tubing testing industry. The only thing we left out of this mobile app was the complication.



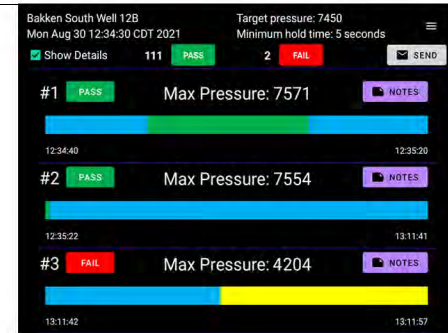
One of the more unique features of the HydroScan system is its live digital charting with auto-zoom. Instead of pinching or pushing buttons to change the screen, the programming automatically zooms in to give the operator the best view of the test in progress. Now they can be 100% confident that if they call it good.. it's good.



With the ability to set a target pressure and minimum hold time, operators can now guarantee that a test is held for the required length of time without any guesswork. When an adjustable threshold is broken, the system begins monitoring pressure data for the target to be exceeded. At that point, the status bar turns blue to start the timer and then green when the hold time has been achieved. 100% operator friendly.

A screenshot of the HydroScan interface showing the leak detection settings. The target pressure is 7450.0. The minimum hold time is 5 seconds. The leak detection checkbox is checked. The leak percent is set to 1. The interface includes CANCEL and DONE buttons.

Another unique feature of the HydroScan system is its leak detection capability. By checking the box and setting the desired percentage, an operator now has a mathematical method of determining when a leak is occurring. If the pressure falls more than the preset percentage before the hold time is reached, then a leak is indicated. A retest button also becomes visible in case the leak can be corrected.



The summary page header provides relevant info like well name, date, target pressure, and required hold time. It also shows the number of tests passed vs failed and offers an email send button to quickly share the test results. With the "Show Details" checkbox, pass, fail, and leak status for each test are displayed, as well as maximum pressure reached and the exact time between tests. Any recorded notes can also be viewed from this screen.



ONLINE STORE

Today, everything is about efficiency. How you manage your time has a huge impact on how well you compete in the marketplace. And it determines how many hours are left at the end of the work day.

Everyone can appreciate the convenience of an Amazon or an Ebay. Jump on your computer or phone, search for the products that you need, click a button or two and then it's on to the next task. But what happens when you have specific questions or need expert advice about how a product is going to perform in the field? • We understand that not every interaction with a vendor is going to be the same. So here at **Mathews Machine**, we want to give you the best of both worlds. Speed and convenience when you want it... and a personal touch when you need it. • Our goal is to put you in control, so that you can find the most efficient path through your busy day. If we can eliminate just a few headaches and frustrations, maybe that gives you back some time that is better spent somewhere else.

CUSTOMER SERVICE

Everyone talks about customer service. Everyone claims to have better customer service than someone else. But if you treat people like a partner (instead of just a customer), you can start to understand what they need and serve them at the highest level.

Over the years we've seen a shift in the way that businesses approach sales and customer service. It wasn't long ago that companies expected you to spend a certain amount of money with them before they would share their expertise or put out much effort. It made sense from a time management standpoint, but it's a terrible way to build relationships. • Our goal has always been to assist people whenever we can and let the sales take care of themselves. We believe that if someone needs help and we give it to them, they will come back to us when they are in the market for the products and services that we offer. • So if you want to know our philosophy, it comes down to two things... treat people like more than just a customer and help them every chance you get.



\$0.00

ABOUT US

FINANCING

UNITS

MEDIA

SHOP

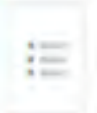
CONTACT US

MY ACCOUNT



Products

Search



Default sorting



VIEW: 12 / 24 / ALL

Product Categories

Downhole Tools

WPC

Water & Water Savers



Uncategorized
Bottom Sheave



Uncategorized
Bow Springs



RUBBER PRODUCTS

So much of downhole hydrostatic tubing testing depends on getting a good seal under pressure. Without it, you're not testing pipe. And you're changing packers so often that customers begin to question your experience.

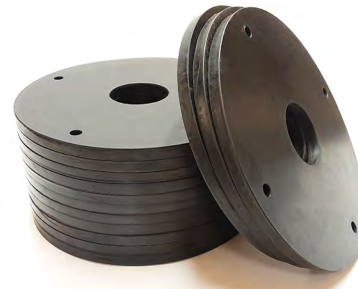
Nobody wants to shut down a job to change a test cup. Even though it is inevitable, having to stop the rig crew and "fix" your tool feels like a failure. If it happens multiple times on a job, pushers and company men may start to ask themselves if that happens with everyone... or just you. • For that reason, we began studying how rubber compounds differ from manufacturer to manufacturer. We wanted to know why some packers work in some parts of the country, but not in others. And why test rings from a certain vendor may do well for several batches and then on the next shipment they won't hold pressure. • This investigation led us on a multiyear journey to find the best recipe for rubber goods in our industry. Our bar style rings, water savers, cups, and scan rubbers have been specially formulated to outperform everything else in the market. In most instances, they last two or three times longer than the competitors best products. Contact us today for a free sample!



When you talk about test cups and bar type rings, everyone has their preferred method to make them last. Store them in a freezer.. sun bake them on the dash of the truck.. pipe testers have tried everything. Wouldn't it be nice to find a packer that just works? Well now you have.



Like to run fast? You need a watersaver that can flex when you need it and not lose fluid when you're comin' up full throttle. And if you're soaking your brand in diesel so they'll get you through the job.. it's time to make a change. Our hard rubber version will have you questioning whether you should try to squeeze out another job or just stop at four.



If you can get more jobs out of your scan rubbers, that means more money in your pocket. Our special rubber formula allows for as many as 6 to 8 jobs when used on all but the deepest of wells. We carry the most popular sizes and with our competitive pricing model, you will always get the best value possible.



We love to get texts like this where our rings are showing almost zero wear after multiple jobs while a competitor is extruding past the backup ring right out of the gate. We encourage you to give our proprietary compound a try. You'll be glad you did.



UNMATCHED SUPPORT

**We have built our business over the last 47 years with one goal in mind...
to serve the oilfield hydrostatic testing industry at the highest level.**

Whenever we invest in machines and equipment, whenever we expand our facilities, whenever we hire and train additional staff members, we do it so that we can continue to exceed the expectations of the best well service companies in the country. We make sure that we have the right tools and personnel to keep pace with the growing hydrotesting market. In other words, our team is here to help your team perform at their absolute best. Whether it's a completely custom test unit or an ergonomic feature on our standard truck, we're here to build equipment that works for you. And if you need quick turnaround times on parts, we've got you covered there also. Let us be your one call (or click) provider for everything hydrostatic testing.



Our full service fabrication team builds the highest quality hydrotest equipment in the industry. When you combine skilled craftsmen with precision plasma cut components, the result is the best hydrostatic tubing and BOP testing trucks in the marketplace.



When it comes to state of the art equipment, we have the right tools to get the job done. Our machine shop features multiple CNC mills and lathes that allow us to produce a wide variety of precision parts used in rack and downhole hydrostatic testing. We also utilize manual machines for small custom orders and prototyping.



In order to be a valued partner to hydrotest companies all across the country, a manufacturer has to maintain a parts inventory that is second to none. Our goal is to have exactly what you need... when you need it. Our machines are always running so that we can be ready when you need a part NOW.

LEASING & FINANCE ASSISTANCE

**Whether you've been in business for decades or just starting out, we have
financing options that are sure to meet your needs.**

Through relationships with our leasing and financing partners, we have been able to help service companies obtain favorable terms on both trucks and equipment without the headaches and hassles that typically come with traditional banks. If you've been in business for some amount of time, a one page form is typically enough for you to get a quality offer. If you're a startup with average or better credit it may take a couple of extra pages, but we can still help you get your new hydrotest equipment out in the field making you money. In most instances, these lenders are able to finance the truck, hydrostatic test unit, and all of the initial tooling in one lease or note. Please contact us if you would like to learn more about these providers.



Mathews Machine
5514 Northwest Freeway
Wichita Falls, TX 76305

Mailing Address:
P.O. Box 3144
Wichita Falls, TX 76301

T: (940) 855-1962
F: (940) 302-0041

E: orders@mathewsmachine.com

W: hydrotest-trucks.com

W: mathewsmachine.com

FB: [mathews machine](https://www.facebook.com/mathewsmachine)

